

Disclaimer

Notice: This presentation has been provided as part of this U.S. Environmental Protection Agency Webinar. This document does not constitute EPA policy. Mention of trade names or commercial products does not constitute endorsement or recommendation for use. Links to non-EPA web sites do not imply any official EPA endorsement of or a responsibility for the opinions, ideas, data, or products presented at those locations or guarantee the validity of the information provided. Links to non-EPA servers are provided solely as a pointer to information that might be useful to EPA staff and the public.

**Stormwater
Pollution Prevention
Plan**

(inadequate)

**For
XYZ Company, Inc.
Denver, CO**



Inadequate BMP

VIOLATION

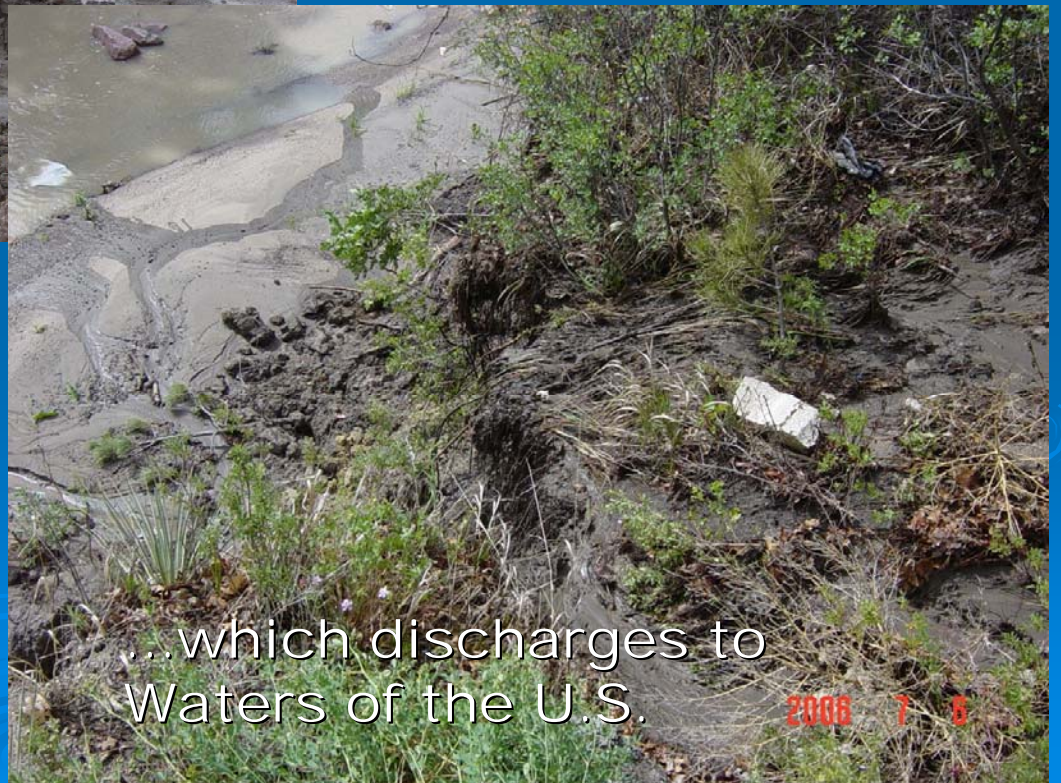
SWPPP SITE INSPECTION REPORT FORM	
Project Name: PINE VALLEY HOUSING PROJECT	Location:
Name and Title of Inspector:	Date: 01/16/09
Inspectors Qualifications:	
Date of Last Storm Event of 0.5 Inches or Greater:	Date of Last Inspection:
*Weather Since Last Inspection:	

Inadequate site inspection

STORM DRAIN BMP INSPECTION CHECKLIST:	
PRACTICE	MAINTENANCE REQUIRED
Preserve Existing Vegetation	
Wind Erosion and Dust Control	See Weekly Inspections
Rolled Erosion Control Products	See Weekly Inspections
Revegetation/Permanent Seeding	See Weekly Inspections



Road construction with
poor BMPs...



...which discharges to
Waters of the U.S.



Storm drain connected to MS4 that discharged to Waters of the US.



Storm drain connected to MS4 system; tributary is approximately 1/3 miles from this storm drain.