



Plastics in a Tough Market

Samuel McCord
Recycling Planner
Sandia National Laboratories

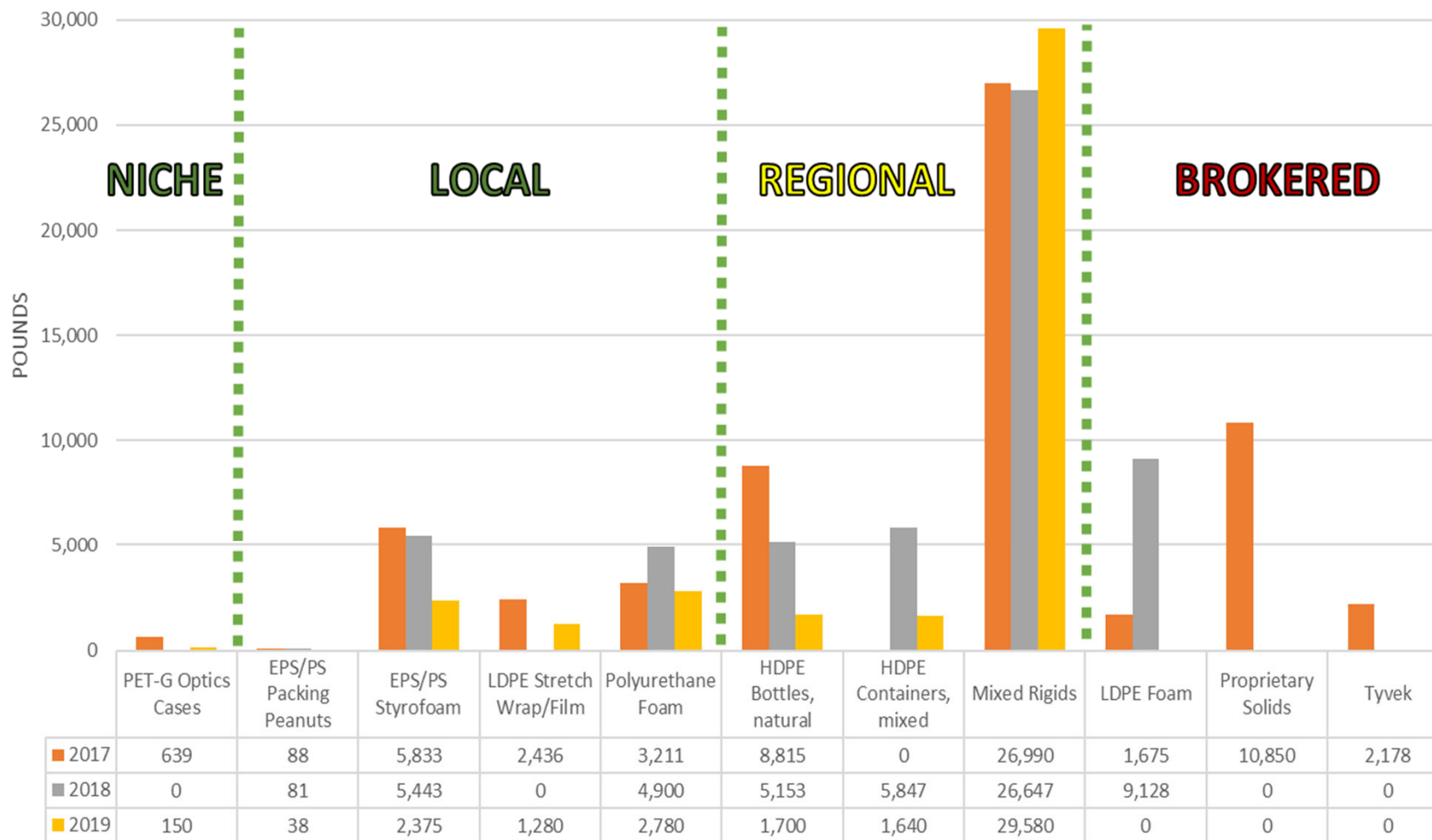
Going to cover...



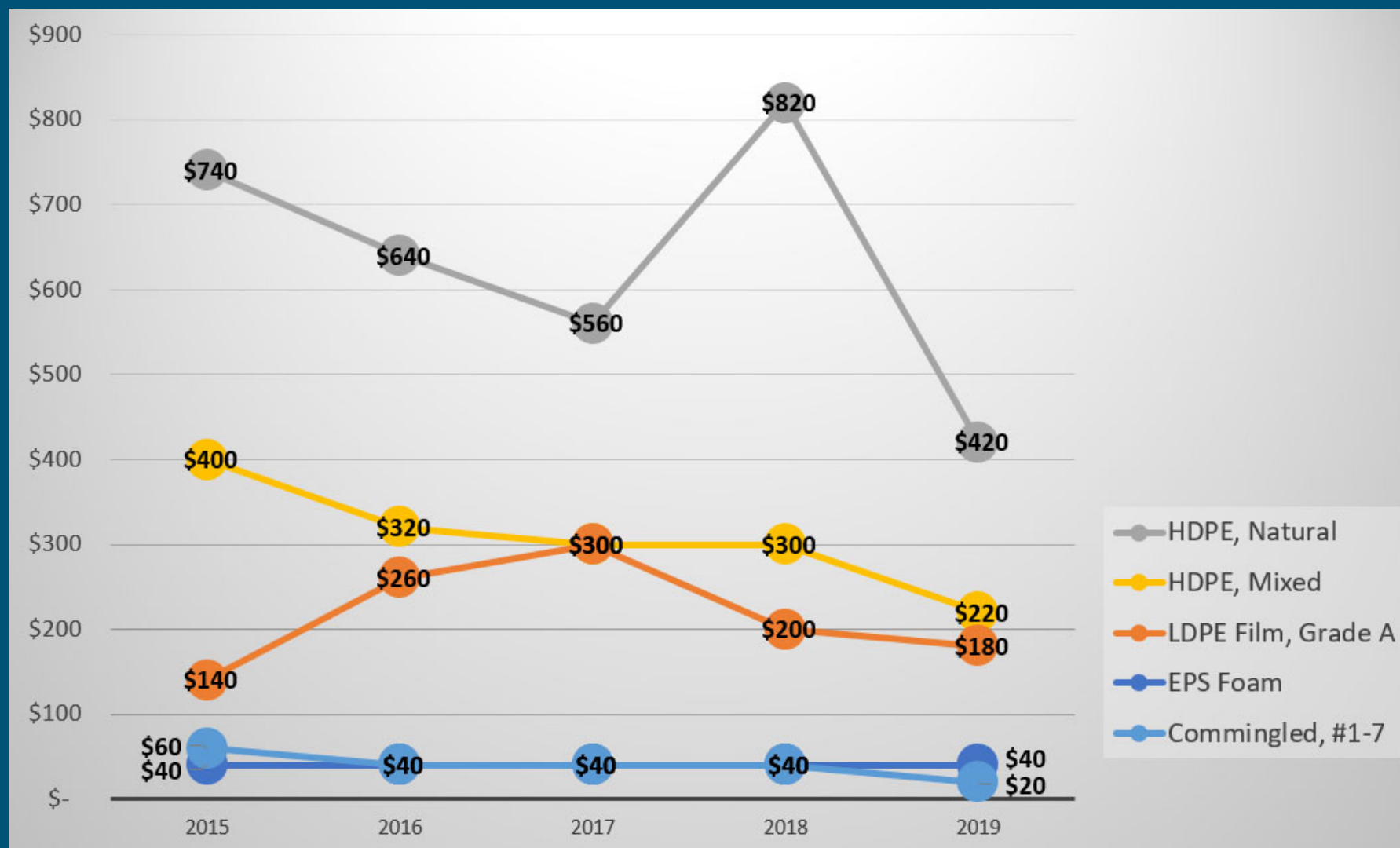
- Scrapping Outlets
- Regional Pricing
- Specific Materials Still Processed
- Viability of Plastics



Plastic Types Shipped



Houston Market Prices per Standard Ton from 2015 through 2019

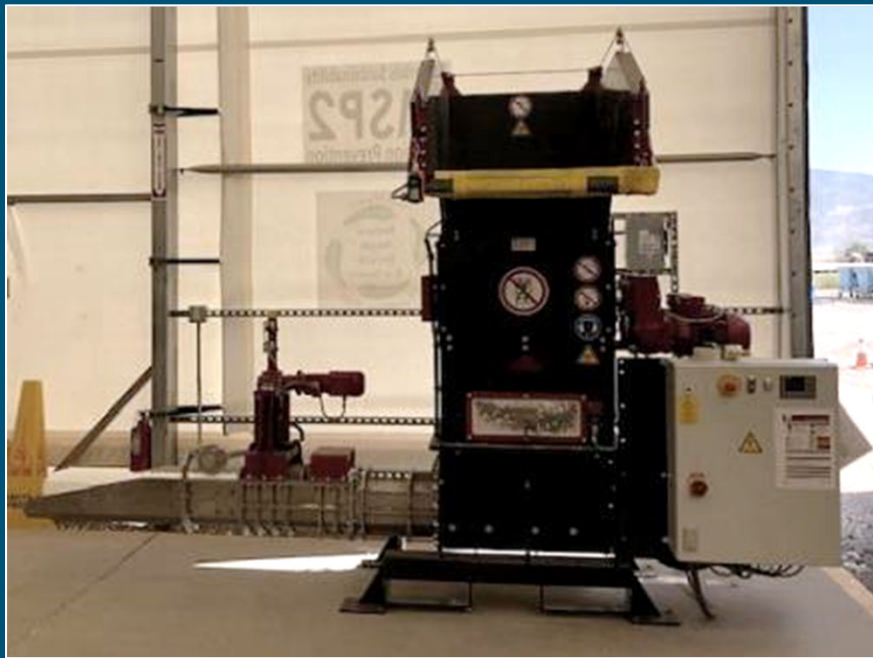


Source: RecyclingMarkets.net, 7/2019

EPS / Polystyrene



- Post-consumer
- Hand processed onsite
- 500 lbs. per pallet
- Made into picture frames



6

LDPE Colored Foam



- Same process as Polystyrene
- 1000 lbs. per pallet
- Shipped to broker in California



| 2011 | 2013 | 2015 | 2016 | 2017 | 2018 |
|-----------|-----------|-----------|----------|----------|---------|
| \$180/ton | \$200/ton | \$200/ton | \$40/ton | \$40/ton | \$0/ton |





7 Polyurethane and Peanuts

- Hand collected to remove contaminants
- No mechanical processing
- Foam sold loose locally

| 2014 | 2015 | 2016 | 2017 | 2018 | 2019 |
|-----------|----------|----------|----------|----------|----------|
| \$100/ton | \$80/ton | \$80/ton | \$80/ton | \$20/ton | \$60/ton |



Local
Shipping
Company



PET-G

- Rigid PET, mixed with a glycol
- Not recyclable with PET
- Returns to manufacturer to grind and reuse for new packaging
- Shipped 2011, 2017, and 2019 to California, not overseas



Proprietary Rigid Plastics



**Sheets and blocks of acrylics:
Lexan, Plexiglas, etc.**

- Never really sure what we're getting
- Comes mixed, sometimes dirty

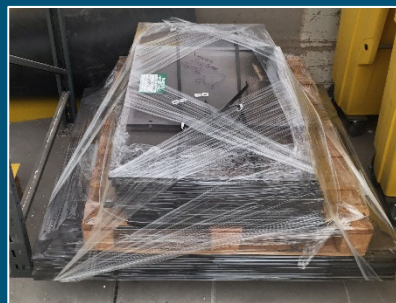
- Shipping in:

2010-2016 = \$

2017 = Accepted, no \$

2018 = Declined

2019 = Declined



LDPE Film (Grade A - 95% Clear)



- From busy docks
- Collected loose
- Picked clean before baling

| 2014 | 2015 | 2016 | 2017 | 2018 | 2019 |
|-----------|-----------|----------|----------|----------|------|
| \$160/ton | \$160/ton | \$80/ton | \$80/ton | \$20/ton | |



Common Rigid Plastics



HDPE, Natural & Colored

- Still good value
- Keep it clean!

Mixed Plastics (1-7)

- Barely any value
- Negative value after local MRF
- How to report recycling weight?





If it doesn't make money:

- Continue collecting until market improves?
- Change what you accept?
- Tell the generators?
- Retrain generators?
- How do you report when there is known contamination?

Take Aways



- Mixed plastics is not working in the Southwest
- Identify what you have the most of and segregate it
- Look for direct buyers such as manufacturers
- Keep tabs on your markets
- Can you change your inputs? Procurement control...