



AF Life Cycle Management Center



AFLCMC... Providing the Warfighter's Edge

Environmental Baseline Surveys and USAF Industrial Facilities



31 October 2019

Mr. Gordon Taylor
Environmental Compliance Chief
(937) 938-3747

Gordon.taylor.5@us.af.mil

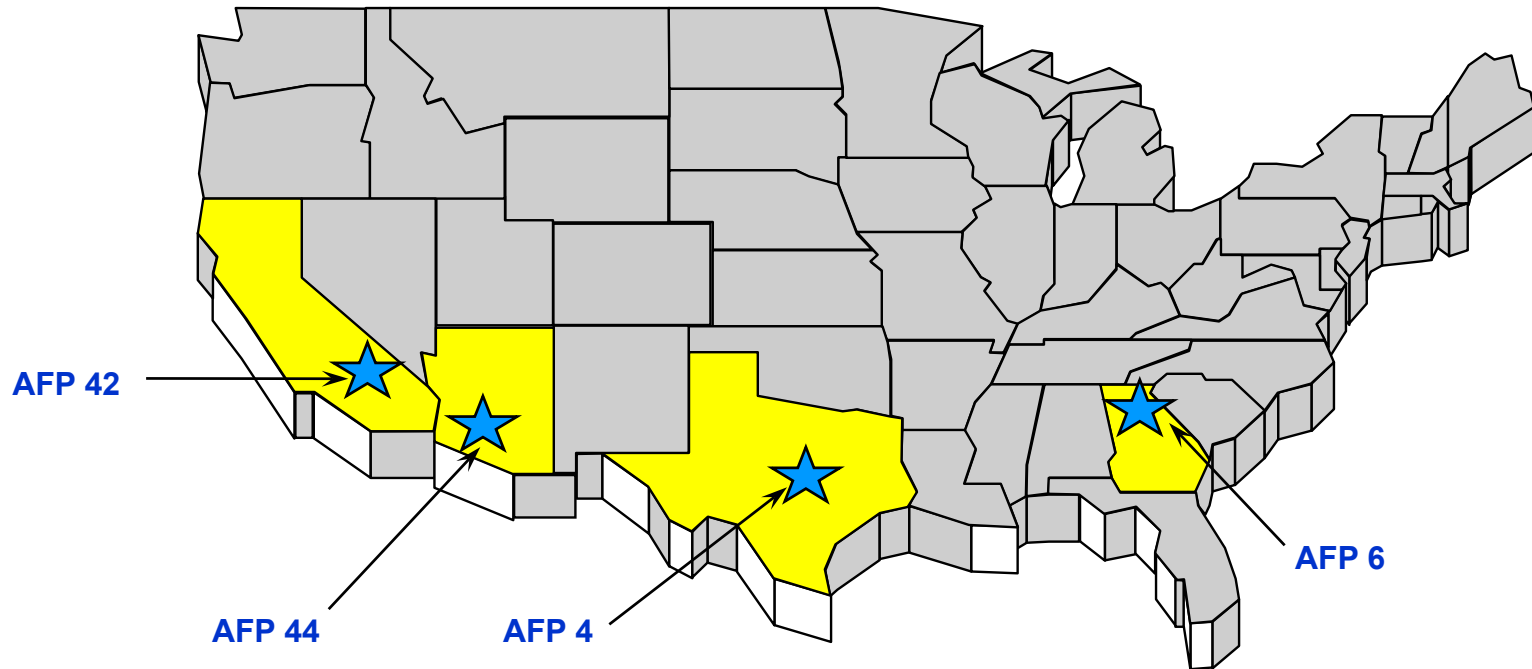
Disclaimer: The opinions in this presentation are the author's alone and do not represent the official position or policy of the U.S. Air Force.



U.S. Air Force Industrial Plants



AFLCMC... Providing the Warfighter's Edge



Current Air Force Plants

AFP 4, Ft Worth TX – Lockheed Martin
AFP 6, Marietta GA – Lockheed Martin
AFP 42, Palmdale CA – Lockheed Martin, Boeing, & Northrop-Grumman
AFP 44, Tucson AZ – Raytheon

WW II & Cold War Era Plants

8,500 acres, >18M sq feet of buildings
One airfield (AFP42) w/ two 12k ft runways
Support numerous critical weapon systems
B-2, F-22, F-35, C-130J, Global Hawk, missiles, other/classified programs
Production, development, & sustainment
100% Government business base
~\$18B per year





AF Policy Directive 32-70

AFLCMC... Providing the Warfighter's Edge



- **Comply with all applicable federal, state, and local environmental laws, regulations, rules, standards, Executive Orders, DoD and Air Force policy, and legally binding agreements**
- **Reduce risk and conserve natural resources by eliminating, reducing, and/or managing environmental impacts and risks**
- **Establish and maintain an EMS that conforms to the International Organization for Standardization (ISO) 14001 standard... including Government-owned, contractor-operated facilities (GOCOs)**



IG “MICT” Env Baseline Survey



AFLCMC... Providing the Warfighter's Edge

| Description | Reference | Assessment Notes |
|--|---|--|
| Are environmental baseline and closeout surveys (including the updates) at all Air Force Industrial Plants prepared as required? | AFI 63-101 / 20-101 ch. 12; AFI 32-7066 para. 3.8 | Yes. Artifacts filed in electronic records and active plants hard copy in EZVC office. AFP 4: 7/2015; AFP 6: Supplemental EBS 5/2019; AFP 42: 2010-2013 (update on contract 8/2016); AFP 44: 10/2013; land parcels 6/2019. |

IG MICT = Inspector General Management Internal Control Toolset



EBS Mandatory Format

Atch 2, AFI 32-7066

AFLCMC... Providing the Warfighter's Edge



EXECUTIVE SUMMARY

E.1 Property Identification (address, assessor parcel number [if applicable], description)

E-2 Site History and Operations

E-3 Proposed Future Use

E-4 Factors Evaluated

E-5 Property Categorization

E-6 Findings and Recommendations

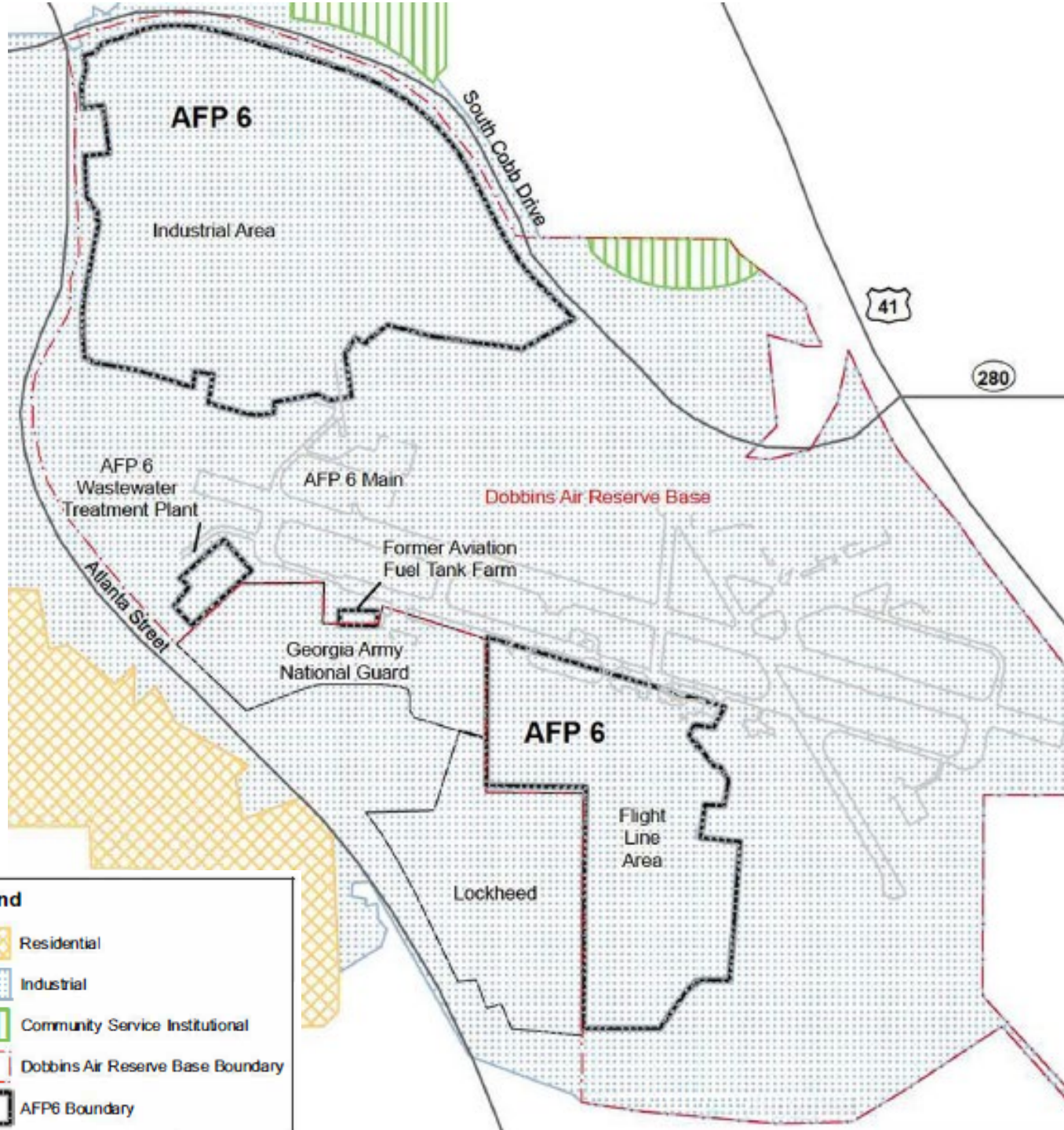


EBS Sections – AFI 32-7066



AFLCMC... Providing the Warfighter's Edge

- 1 Purpose of the environmental baseline survey
- 2 Survey methodology
- 3 Property description
- 4 Property categorization
- 5 Findings for subject property
- 6 Applicable regulatory compliance issues
- 7 Findings for adjacent properties
- 8 Recommendations
- 9 Certifications
- Appendices

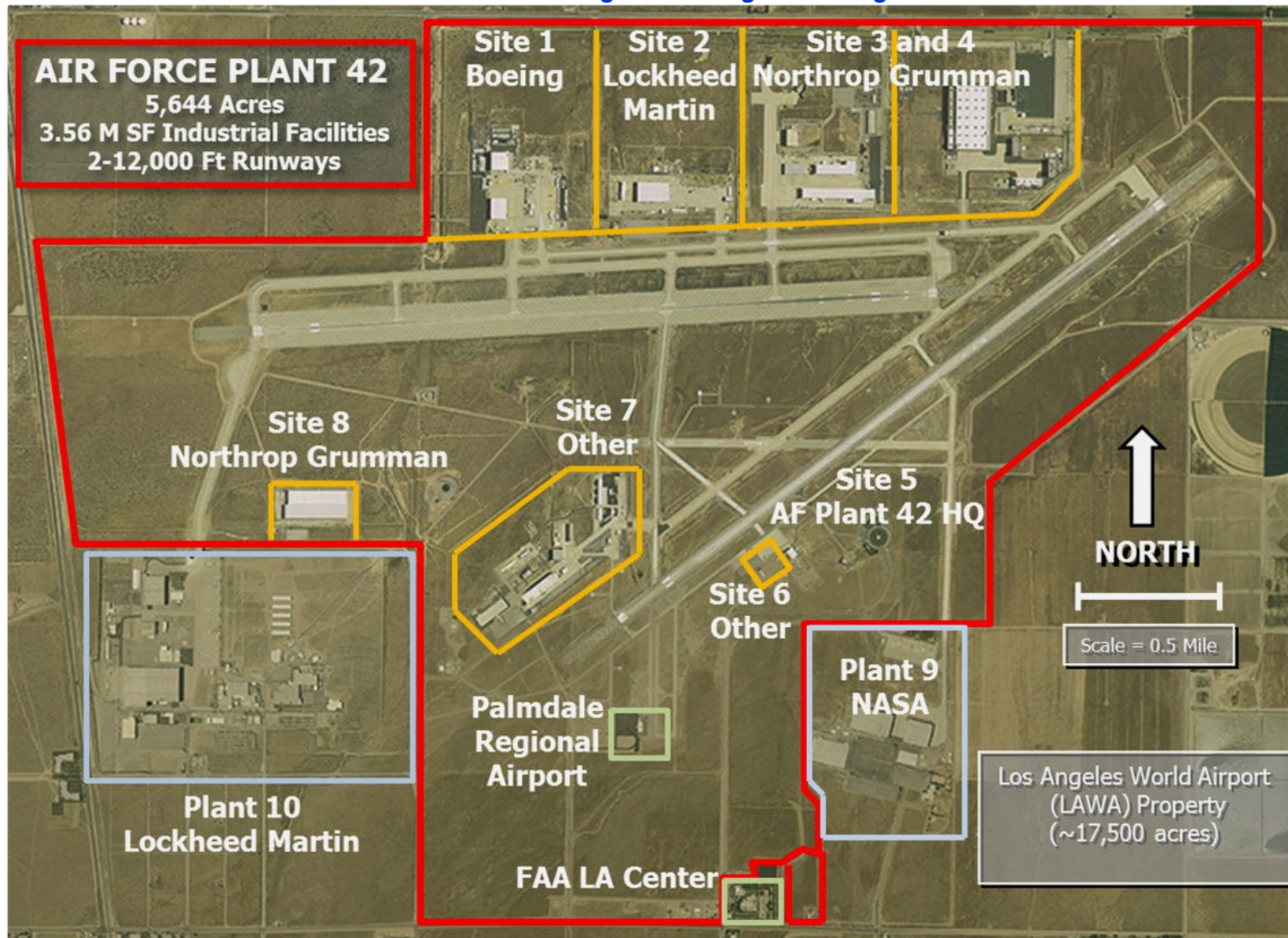




AF Plant 42 and Surroundings



AFLCMC... Providing the Warfighter's Edge

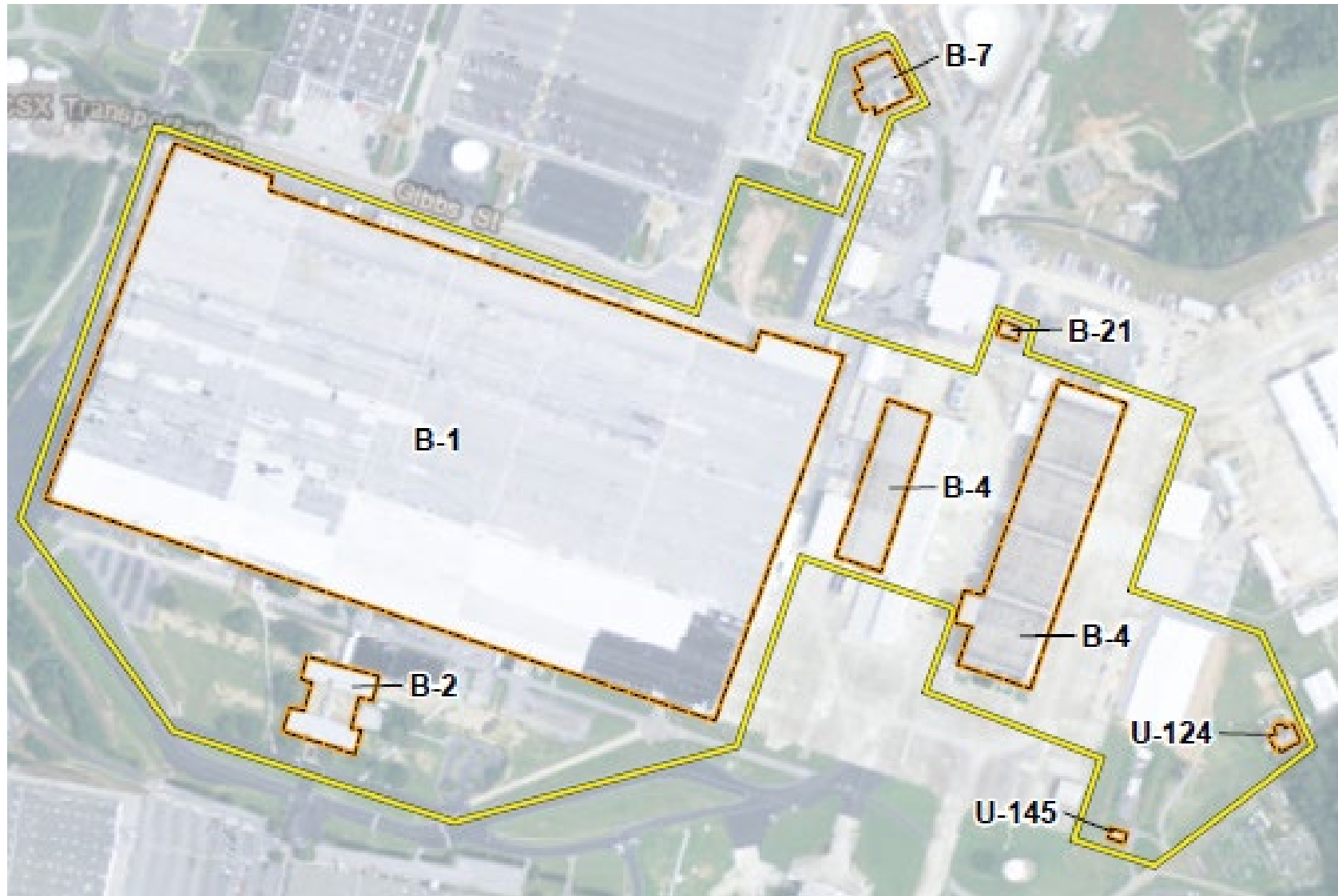




Bell Bomber District—AF Plant 6



AFLCMC... Providing the Warfighter's Edge

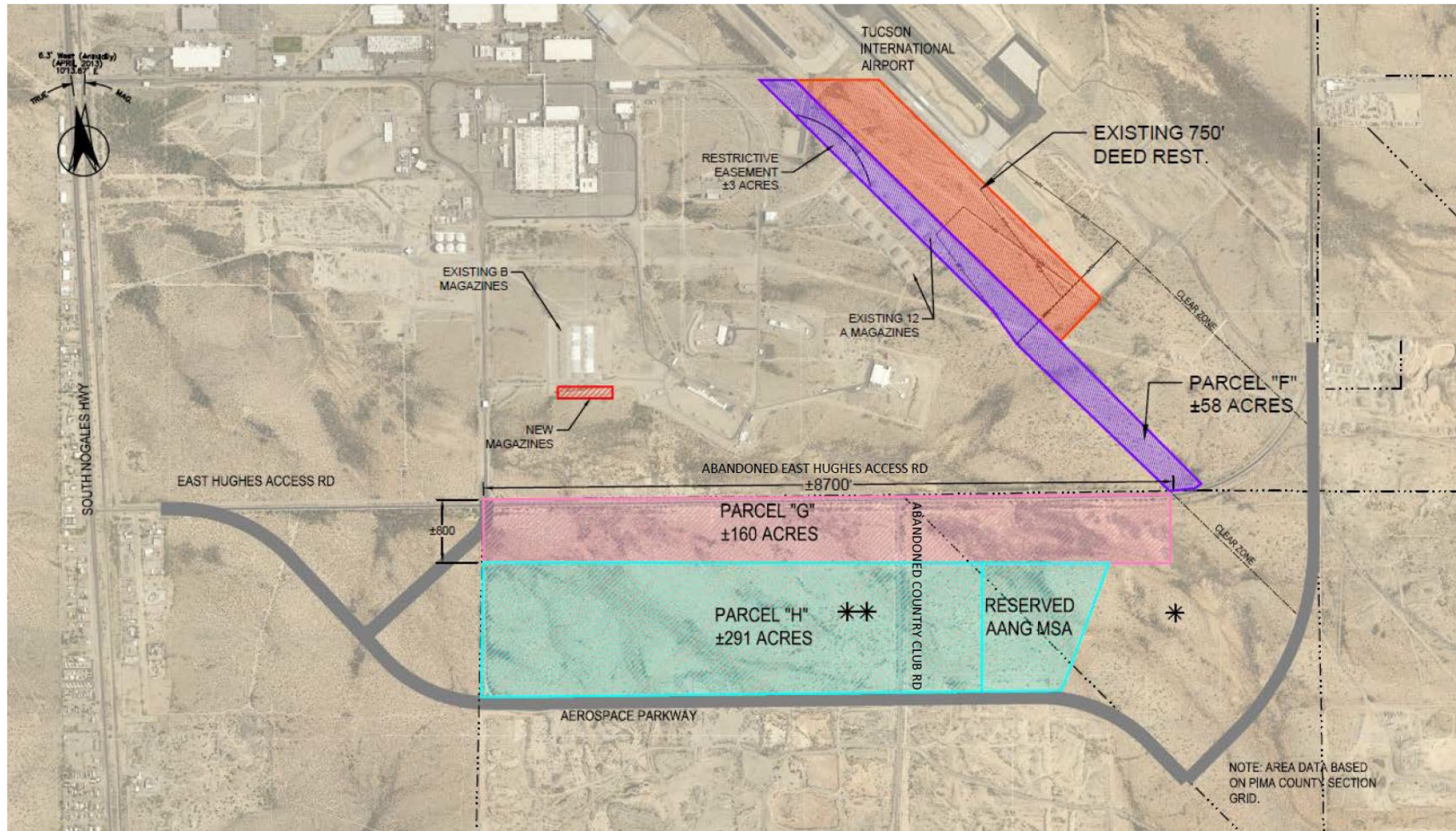


Yellow line signifies the district boundary. Orange lines around contributing buildings.



AFP 44 Deed Swap

AFLCMC... Providing the Warfighter's Edge





Conclusion



AFLCMC... Providing the Warfighter's Edge

- **Lessons learned**
 - Many available, paid for resources with federal government
 - Networking
 - Recordkeeping on your and adjacent properties
- **Questions?**